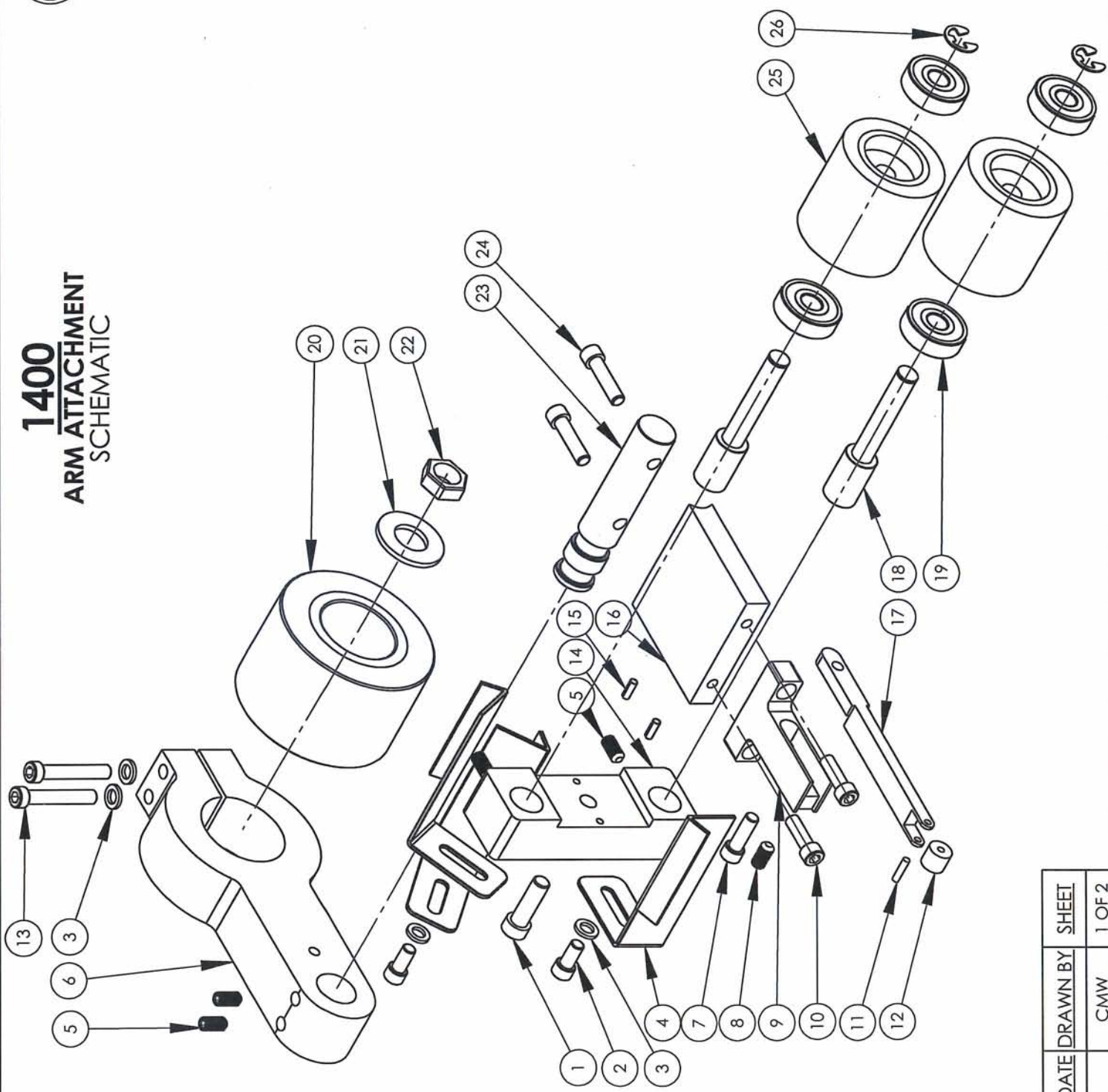


1400 ARM ATTACHMENT SCHEMATIC

BURR KING

1220 TAMARA LANE
WARSAW, MO. 63355



DATE DRAWN	REV DATE	DRAWN BY	SHEET
9/1/2009		CMW	1 OF 2

**OPTIONAL
CONTACT WHEELS**

1439 ARM USES
DB2003 5/16 x 3/8 STEEL

1440 ARM USES
DC2212 5/8 x 3/8 RUBBER
DA2003 7/16 x 3/8 STEEL

1400			QTY.
ITEM NO.	PART NUMBER	DESCRIPTION	
1	1430	BOLT, 5/16-18 x 1, ALLEN	1
2	1431	SCREW, 1/4-20 X 1/2, ALLEN CS	2
3	5	WASHER, 960-416 AN	4
4	1429	GUARD, PINCH, 2"	3
5	1445	SCREW, 1/4-20 x 3/8 SET	4
6	1425	BRACKET, MOUNTING	1
7	1435	BOLT, 1/4-28 x 3/4, ALLEN CS	1
8	1441	SCREW, 1/4-28 x 1/2, SET	1
9	1438	SUPPORT, CONTACT ARM	1
10	209	SCREW, 1/4-20 X 3/4 ALLEN HEAD	2
11	1432	PIN, ARBOR, 0.1245 DIA	1
12	DA2212	CONTACT WHEEL, 7/16 x 3/8 RUBBER	1
13	2-0011	SCREW, 1/4-20 X 1.5, SOC CAP	2
14	1428	SUPPORT, WHEEL	1
15	1437	PIN, ROLL, 1/8 x 3/8	2
16	1427	SUPPORT, ARM	1
17	1439	ARM, 1/2" CONTACT	1
18	1444A	SHAFT, IDLER	2
19	202B	BEARING	4
20	302	WHEEL, CONTACT, 3 x 2, 70 DURO	1
21	1456	WASHER, 5/8, FLAT, SAE	1
22	727	NUT, 5/8-18 RH, JAM, BRT	1
23	1426	BAR, PIVOT	1
24	30	SCREW, 1/4-20 x 1, SOC CAP	2
25	1444U	WHEEL, IDLER	2
26	1454	RING, RETAINING, E STYLE	2

TITLE	DATE DRAWN	REV DATE	DRAWN BY	SHEET
1400	9/1/2009		CMW	2 OF 2