

MODEL 1000

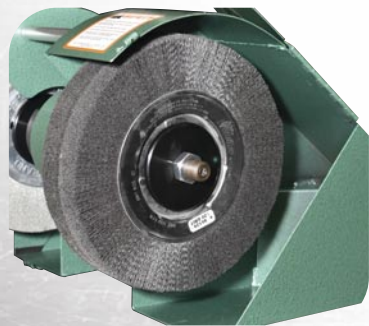


e-catalog

14120 shown

Model 1000 takes 10" wheels. (Not included)

Shown with optional variable speed.



- Reliability of oversize "deep groove" ball bearings, fully shrouded and sealed for extended life
- Flexibility of bench or pedestal mounts
- Safety maximized by wheel guards with latching access doors
- Cleanliness maximized by an integrated dust shroud with dust outlet
- Expandable by the addition of magnetic starters
- Space saving compact size friendly to "cell manufacturing"
- Economy of minimal maintenance
- Full one year limited warranty

The Models 1000 and 1200 de-burrs, grains, polishes, cleans, de-scales, and buffs at a single station, a single machine, and a single operator.

- Convenient "up-front" wheel design takes the "difficult" out of "difficult to do parts"
- Convenient spindle position for speedy, comfortable operator transfer of parts wheel to wheel
- Versatility of convolute, flap, wire, fiber, nylon, or bristle-brush wheels
- Versatility enhanced by narrow and wide wheel capability mix and match wheel sizes and types
- Rugged, oversize, hardened and ground spindle with counter threaded 3/4" diameter wheel arbors
- Versatility of variable speed control options
- Work reducing horse power options
- Smooth "velvet touch" operation delivered by the precision you expect from Burr King
- Smooth, quiet "Micro-V" drive technology is operator friendly
- Durability of a cast aluminum frame

MODEL 1200

Uses 12" wheels. (Not included)

(Pedestal included)

19610 shown

Shown with optional variable speed.



e-catalog

