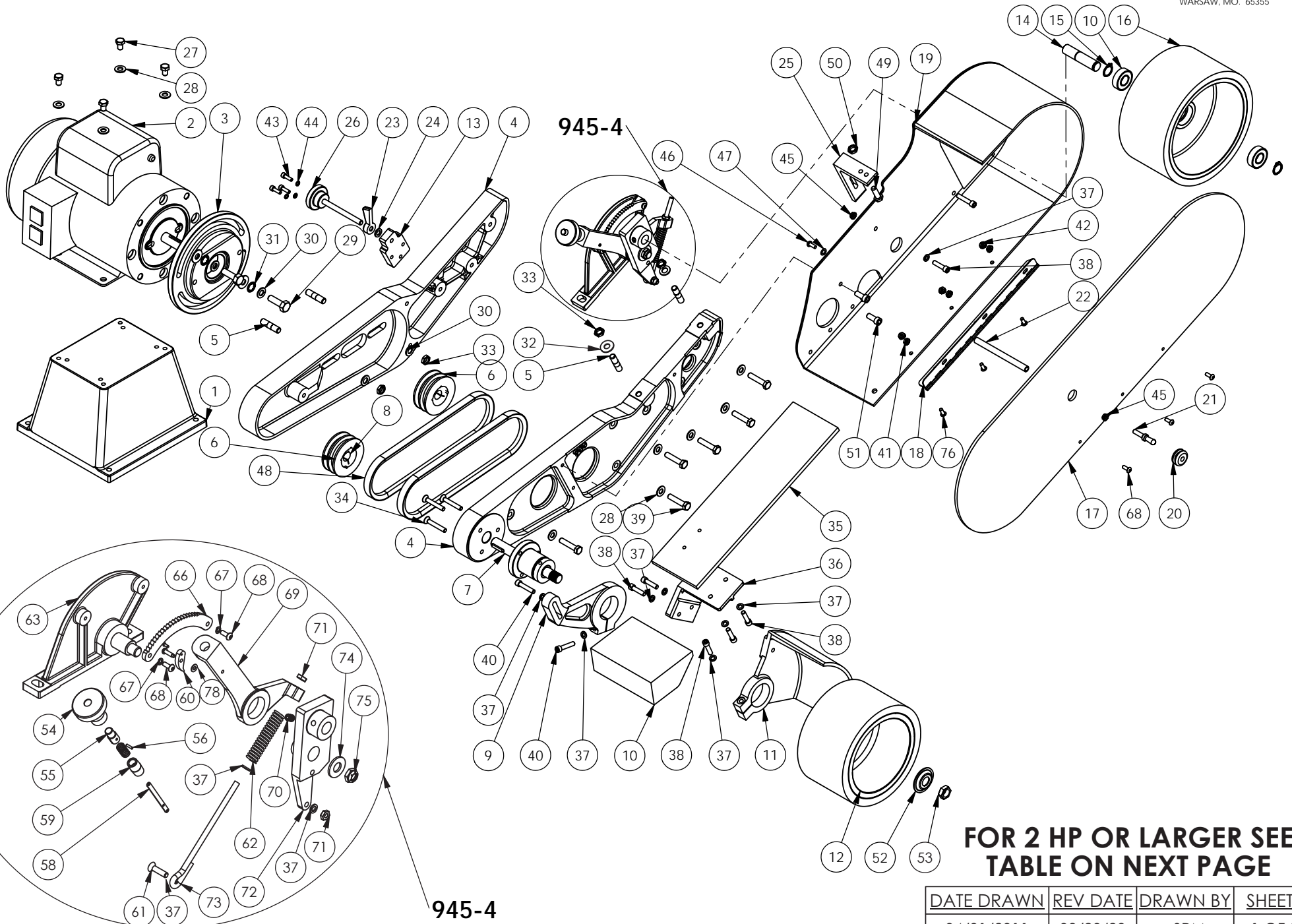


# M960-400

## SCHEMATIC

**BURR KING**

1220 TAMARA LANE  
WARSAW, MO. 65355



**FOR 2 HP OR LARGER SEE  
TABLE ON NEXT PAGE**

| DATE DRAWN | REV DATE | DRAWN BY | SHEET  |
|------------|----------|----------|--------|
| 04/01/2011 | 03/20/20 | SRM      | 1 OF 2 |

## M960-400

| ITEM NO. | PART NUMBER | DESCRIPTION                     | QTY. |
|----------|-------------|---------------------------------|------|
| 1        | 941         | BASE                            | 1    |
| 2        | MOTOR       | CALL FACTORY                    | 1    |
| 3        | 908         | ADAPTER, C-FACE MOTOR           | 1    |
| 4        | 900-4A      | FRAME, GUARD                    | 1    |
| 5        | 920         | STUD 3/8"x1 1/2", DOUBLE        | 4    |
| 6        | 933         | PULLEY, USES 947 BUSHING        | 2    |
| 7        | 701         | SHAFT, BEARING                  | 1    |
| 8        | 947         | BUSHING                         | 2    |
| 9        | 905-4       | ARM, WORKREST SUPPORT           | 1    |
| 10       | 906-4       | WORKREST, ANTITILT              | 1    |
| 11       | 903-4       | GUARD, CONTACT WHEEL            | 1    |
| 12       | 802-4       | CONTACT WHEEL                   | 1    |
| 13       | 923-4       | BRACKET, TRACKING               | 1    |
| 14       | 707c        | SHAFT, BEARING                  | 1    |
| 15       | 701F        | WHEEL, IDLER CIR-CLIP           | 2    |
| 16       | 907-4       | WHEEL, IDLER, WITH BEARING      | 1    |
| 17       | 942B        | DOOR, GUARD                     | 1    |
| 18       | 742E        | HINGE                           | 1    |
| 19       | 942-4A      | GUARD, SAFETY, PAINTED          | 1    |
| 20       | 742H        | GROMMET, SAFETY GUARD DOOR      | 1    |
| 21       | 742L        | LATCH, SAFETY GUARD DOOR        | 1    |
| 22       | 942C-4      | STANDOFF, DOOR                  | 1    |
| 23       | 922         | LOCK, KNOB, TRACKING            | 1    |
| 24       | 18          | WASHER, 960-516, AN             | 1    |
| 25       | 924         | SUPPORT, BACKUP                 | 1    |
| 26       | 921-4       | KNOB, TRACKING ASSY             | 1    |
| 27       | 2           | BOLT, 5/16-18x1 1/2 HEX HEAD    | 4    |
| 28       | 4           | WASHER, 5/16 SAE ZINC PLTD      | 10   |
| 29       | 1-0003      | 3/8-16 x 1 1/4 HEX HEAD BOLT    | 2    |
| 30       | 17          | WASHER, 960-616, AN             | 6    |
| 31       | 5-0014      | WASHER, LOCK 3/8, INTERNAL STAR | 2    |
| 32       | 7-0058      | WASHER                          | 1    |
| 33       | 22          | NUT, 3/8-24, NYLOC              | 4    |
| 34       | 6           | 1/4-20 x 1 1/2 FH SOC           | 3    |
| 35       | 904-4A      | PLATEN                          | 1    |
| 36       | 904B        | BRACKET, PLATEN                 | 1    |
| 37       | 5           | WASHER, 1/4 AN                  | 11   |
| 38       | 30          | 1/4-20x1 SHCS                   | 6    |
| 39       | 1-0019      | BOLT, 5/16-18x1 1/2 HEX HEAD    | 6    |
| 40       | 31          | 1/4-20x1 1/4 SHCS               | 3    |
| 41       | 14          | NUT, 10-24, KEP                 | 3    |
| 42       | 23          | NUT, 6-32, KEP, PLTD            | 3    |
| 43       | 2-0023      | SCREW, 10-24 X .625 ALLEN HEAD  | 3    |
| 44       | 5-0036      | WASHER, #8, LOCK, INTERNAL      | 3    |
| 45       | 4-0013      | NUT, KEP, 1/4-20                | 2    |

## M960-400

| ITEM NO.     | PART NUMBER | DESCRIPTION                      | QTY. |
|--------------|-------------|----------------------------------|------|
| 46           | 29          | SCREW, 10-32 X 1/2 BH            | 1    |
| 47           | 5-0032      | WASHER, 1/4, LOCK, SPLIT, PLTD   | 1    |
| 48           | 951         | BELT, V DRIVE                    | 2    |
| 49           | 1           | BOLT, 5/16-18x1, HH, GRD 5, PLTD | 1    |
| 50           | 4-0009      | NUT, 3/8-16, JAM, PLTD           | 1    |
| 51           | 2-0001      | 1/4-20x1 1/4 SHCS                | 2    |
| 52           | 726         | WASHER, SPRING FLANGE            | 1    |
| 53           | 727         | NUT, 5/8-18 RH, JAM, BRT PLT     | 1    |
| <b>945-4</b> |             |                                  |      |
| ITEM NO.     | PART NUMBER | DESCRIPTION                      | QTY. |
| 54           | 737A        | KNOB, REAR TENSION ARM           | 1    |
| 55           | 737B        | BUTTON                           | 1    |
| 56           | 26          | PIN, 3/32 x 3/8, ROLL PLTED      | 1    |
| 57           | 737D        | SPRING, BUTTON                   | 1    |
| 58           | 937C        | STRIP                            | 1    |
| 59           | 737E        | NIPPLE, PIPE                     | 1    |
| 60           | 737F        | PAWL                             | 1    |
| 61           | 34          | SCREW, 1/4-20 X 1, FH PHILLIPS   | 1    |
| 62           | 738         | SPRING, BELT TENSION             | 1    |
| 63           | 940         | SUPPORT, IDLER WHEEL             | 1    |
| 64           | 27          | SCREW, DRIVE, #8 X 5/8           | 1    |
| 65           | 28          | SCREW, DRIVE, #2 x 1/4           | 1    |
| 66           | 736         | RACHET                           | 1    |
| 67           | 15          | WASHER, 5/16 LOCK, SPLIT         | 2    |
| 68           | 9           | SCREW, 10-24x1/2 BH, BLK OXIDE   | 5    |
| 69           | 937G        | HANDLE                           | 1    |
| 70           | 25          | SCREW, SET 5/16-18 x 3/8         | 1    |
| 71           | 3           | NUT, 1/4-20 JAM, PLTD            | 2    |
| 72           | 935         | SUPPORT, REAR WHEEL              | 1    |
| 73           | 939         | GUIDE, SPRING                    | 1    |
| 74           | 21          | WASHER, 1/2 ID                   | 1    |
| 75           | 20          | NUT, NYLOK JAM, 1/2-20           | 1    |
| 76           | 24          | SCREW, 6-32 x 1/2, MACH          | 3    |
| 78           | 5-0027      | WASHER                           | 1    |



| 1 1/2 HP | CHANGES TO | 2-3HP         | BUSHINGS    |             |
|----------|------------|---------------|-------------|-------------|
| 730      |            | 931           | 949<br>5/8" | 950<br>7/8" |
| 725      |            | 933           | 947<br>5/8" |             |
| 429      |            | 951<br>2(qty) |             |             |

| TITLE    | DATE DRAWN | REV DATE | DRAWN BY | SHEET  |
|----------|------------|----------|----------|--------|
| M960-400 | 04/01/11   | 03/20/20 | SRM      | 2 OF 2 |