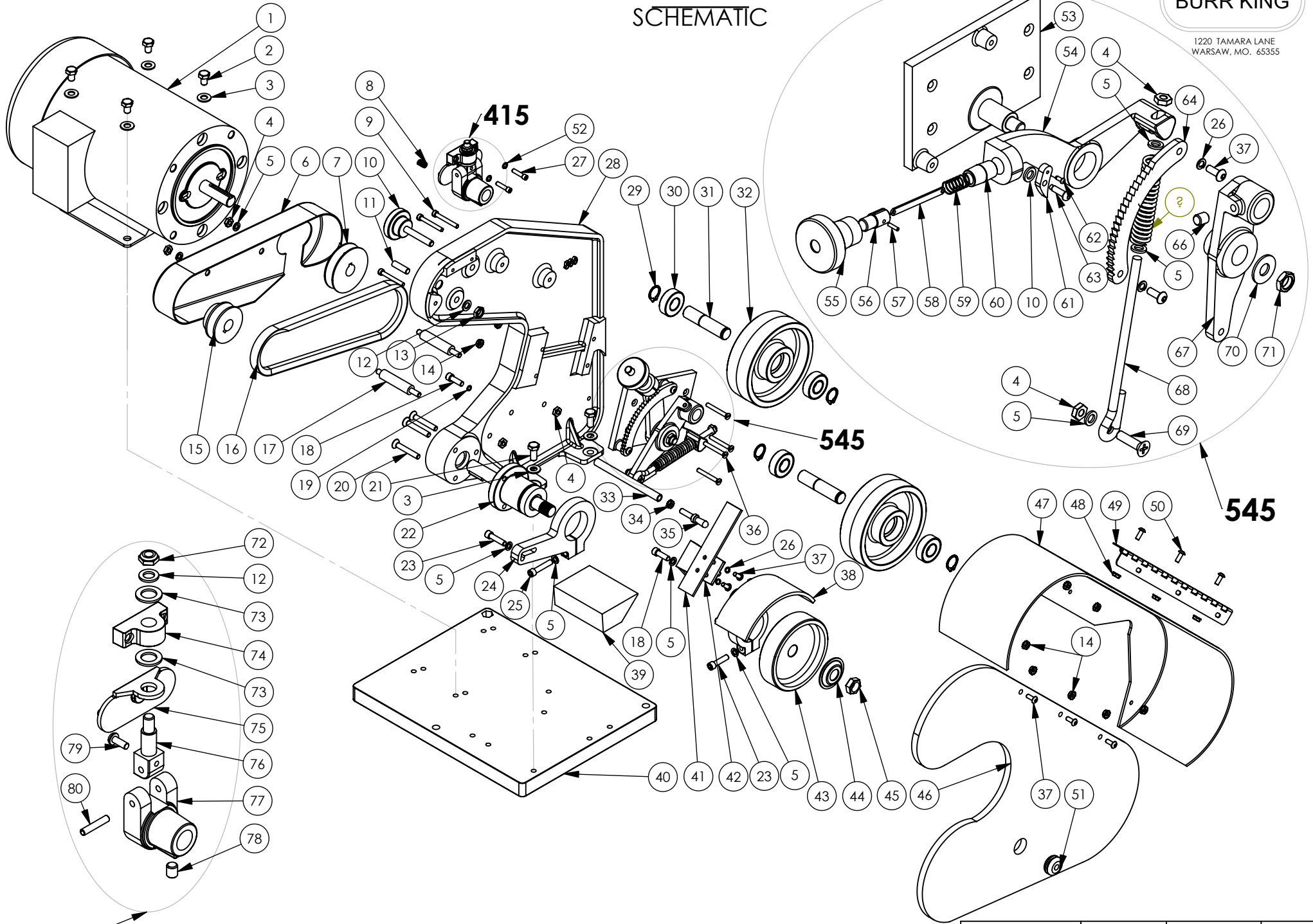


# M562 SCHEMATIC

**BURR KING**

1220 TAMARA LANE  
WARSAW, MO. 65355



**415**

DATE DRAWN	REV DATE	DRAWN BY	SHEET
8/26/2009		CMW	1 OF 2

<b>M562</b>			
ITEM NO.	PART NUMBER	DESCRIPTION	QTY.
1	MOTOR	CALL FACTORY *	1
2	2	BOLT, 5/16-18 x 1/2 HEX HEAD	4
3	4	WASHER, 5/16 SAE ZINC PLTD	8
4	3	NUT, 1/4-20 JAM, PLTD	4
5	5	WASHER, 1/4 AN	10
6	428	GUARD, V-BELT	1
7	725	PULLEY, 2.5	1
8	338	SPRING, TRACKING	1
9	8	SCREW, 10-24 x 1-1/2, BUTTON	4
10	711	KNOB ASSY, TRACKING	1
11	421A	SCREW, 3/8-16 X 1 1/2 AHCS	1
12	18	WASHER, 960-516, AN	2
13	4-0009	NUT, 5/16-18, JAM	1
14	14	NUT, 10-24, KEP	11
15	425	PULLEY, 2.0	1
16	429	BELT, V DRIVE	1
17	728A	STUD, GUARD, V, BELT	2
18	209	SCREW, 1/4-20 X 3/4 ALLEN HEAD	2
19	5-0032	WASHER, 1/4, LOCK, SPLIT	1
20	6	SCREW, 1/4-20 x 1 1/2 FH SOC	3
21	37	BOLT, 5/16-18x3/4 HEX HEAD	4
22	701	BEARING, CONTACT WHEEL ASSY	1
23	30	SCREW, 1/4-20x1 SHCS	2
24	405-1	ARM, WORKREST SUPPORT	1
25	31	SCREW, 1/4-20x1 1/4 SHCS	1
26	15	WASHER, #10, LOCK	4
27	13	SCREW, 10-24 x 3/4, SOC, HD, CAP	2
28	500	FRAME	1
29	701F	RING, RETAINING	4
30	701B	BEARING 5/8 x 1 3/8 x .432	4
31	707c	SHAFT, BEARING	2
32	507	WHEEL, IDLER w/BEARINGS & SHAFT	2
33	942C-4	STANDOFF, DOOR	1
34	4-0013	NUT, KEP, 1/4-20	1
35	742L	LATCH, SAFETY GUARD DOOR	1
36	7	SCREW, 10-24 x 1 1/2 FLAT HD	4
37	9	SCREW, 10-24x1/2 BH, BLK OXIDE	7
38	503	GUARD, CONTACT WHEEL	1
39	706-1	WORKREST, ANTI-TILT	1
40	731	BASE, MACHINE	1
41	504A	PLATEN, BACKUP	1

**\* 011C ROCKER SWITCH FOR 1 PH.**

<b>M562</b>			
ITEM NO.	PART NUMBER	DESCRIPTION	QTY.
42	504B	BRACKET, BACKUP	1
43	502	CONTACT WHEEL 4.75 x 1	1
44	726	FLANGE, OUTER WHEEL	1
45	727	NUT, 5/8-18 RH, JAM, BRT PLT	1
46	542B-1	DOOR, GUARD	1
47	542A	GUARD, SAFETY	1
48	23	NUT, 6-32, KEP, PLTD	3
49	742E	HINGE, GUARD TO DOOR	1
50	24	SCREW, 6-32 x 1/2, MACH	3
51	742 H	GROMMET	1
52	5-0035	WASHER, #10, LOCK, HIGH COLLAR	2

<b>545</b>			
ITEM NO.	PART NUMBER	DESCRIPTION	QTY.
53	434	PLATE, BASE	1
54	437G	HANDLE, REAR WHEEL	1
55	737A	KNOB, REAR TENSION ARM	1
56	737B	BUTTON	1
57	26	PIN, 3/32 x 3/8, ROLL PLTD	1
58	437C	STRIP	1
59	737D	SPRING, BUTTON	1
60	737E	NIPPLE, PIPE	1
61	437F	PAWL, REAR WHEEL	1
62	28	SCREW, DRIVE, #2 x 1/4	1
63	27	SCREW, DRIVE, #8 X 5/8	1
64	736	SECTOR	1
65	538	SPRING, BELT TENSION	1
66	25	SCREW, SET, 5/16-18 X 3/8, ALLEN	1
67	435	SUPPORT, REAR WHEEL	1
68	539	GUIDE, SPRING	1
69	34	SCREW, 1/4-20 X 1, FH PHILLIPS	1
70	40	WASHER, SAE, 3/8	1
71	39	NUT, 3/8-24, JAM, ESNA, NTE	1

<b>415</b>			
ITEM NO.	PART NUMBER	DESCRIPTION	QTY.
72	19	NUT, 5/16-24, ESNA	1
73	16	WASHER, 960-716, AN	2
74	717	HOLDER, SWIVEL	1
75	410	BRACKET, TRACKING	1
76	416	SWIVEL, UPPER WHEEL	1
77	414	SUPPORT, BEARING, UPPER	1
78	25	SCREW, SET, 5/16-18 X 3/8, ALLEN	1
79	29	SCREW, 10-32 X 1/2 BH	1
80	424	PIN, 3/16 X 1 1/2, ROLL	1

**BURR KING**

1220 TAMARA LANE  
WARSAW, MO. 65355

TITLE	DATE DRAWN	REV DATE	DRAWN BY	SHEET
M562	8/26/2009		CMW	2 OF 2