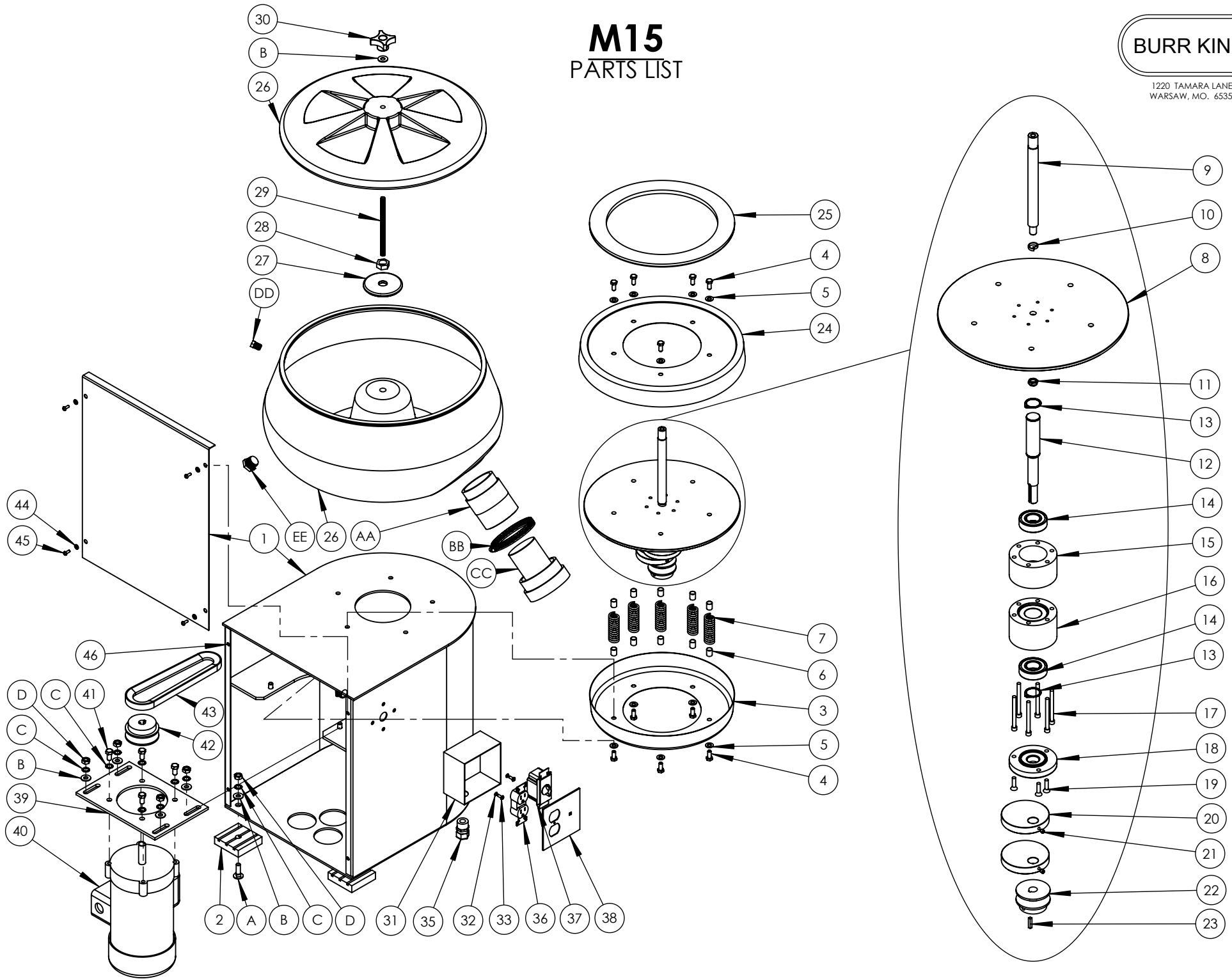


M15

PARTS LIST

BURR KING

1220 TAMARA LANE
WARSAW, MO. 65355



M15			
ITEM NO.	PART NUMBER	DESCRIPTION	QTY.
1	5000-1	STAND ASS'Y	1
2	5019	FEET, ASS'Y	4
A	1-0037	BOLT, 3/8-16 x 1-1/4, CARRAGE	4
B	40	WASHER, SAE, 3/8	9
C	3B	WASHER, LOCK 3/8, INTERNAL STAR	12
D	12B	NUT, 3/8-16, HEX, FULL, GRD 5	8
3	1516-3	COVER, SPRING	1
4	37	BOLT, 5/16-18x3/4 HEX, GRD5	10
5	4	WASHER, 5/16 SAE ZINC PLTD	10
6	5017	SPRING, INSERT	10
7	5020	SPRING	5
8	5009	PLATE, BOWL	1
9	5012	BOWL SHAFT	1
10	1031	NUT, 3/4-16, RH, HEX, THIN	1
11	4-0024	NUT, NYLOK JAM, 3/4-16	1
12	5011	SHAFT, BEARING	1
13	10-0003	CIRCLIP 1" DIA	2
14	11-0004	BEARING	2
15	5008	HOUSING, UPPER BEARING	1
16	5007	HOUSING, LOWER BEARING	1
17	2-0058	BOLT, 1/4-28 x 2 3/4 SHCS	6
18	5016	CAP, HOUSING	1
19	7-0008	SCREW, 1/4-20 x 1 FHD	3
20	5014	WEIGHT, COUNTER	2
21	5021	SCREW, 1/4-20 x 1/4, BRASS TIP	2
22	5024	PULLEY, 2.5 x 5/8	1
23	701G	KEY, 3/16 X 3/16 X 7/8	1
24	1511-3	SKIRT	1
25	5015	PAD, BOWL	1
26	1540	BOWL, ASS'Y	1
AA	5006	CHUTE	1
BB	5018	CLAMP, HOSE	1

M15			
ITEM NO.	PART NUMBER	DESCRIPTION	QTY.
CC	1541	PLUG, CHUTE	1
DD	1506	PLUG, PLASTIC, 1/4" MALE	1
EE	3379	PLUG, PVC, 3/4" STRAIGHT	1
27	1030	FLANGE	1
28	1031	NUT, RH, 3/4 x 16 HEX	1
29	1502-1	SHAFT, 3/8-16-1A, 6 1/4 LONG	1
30	1500	KNOB	1
31	3326	BOX, 2 GANG	1
32	15	WASHER, #10 LOCK	2
33	9	SCREW, 10-24x1/2 BH	2
34	3346	NIPPLE, CHASE 1/2"	1
35	3356	RELIEF, STRAIN 1/2"	1
36	5004	RECEPTACLE, DUPLEX	1
37	5002	TIMER	1
38	5003	PLATE, COVER, BOX	1
39	5010	PLATE, MOTOR MOUNT	1
40	9098-1 9098	MOTOR, 1/2 HP, 1 PH MOTOR, 1/2 HP, 3 PH	1
41	1-0005	BOLT, 3/8-16 x 3/4, HEX	4
42	5023	PULLY, 3.0 x 5/8	1
43	5022	BELT, V-PULLY	1
44	5	WASHER, 960-416 AN	4
45	29	SCREW, 10-32 X 1/2 BH	4
46	5025	CLIP, ON NUT	4

SEE NEXT PAGE FOR VARIABLE SPEED SET UP.