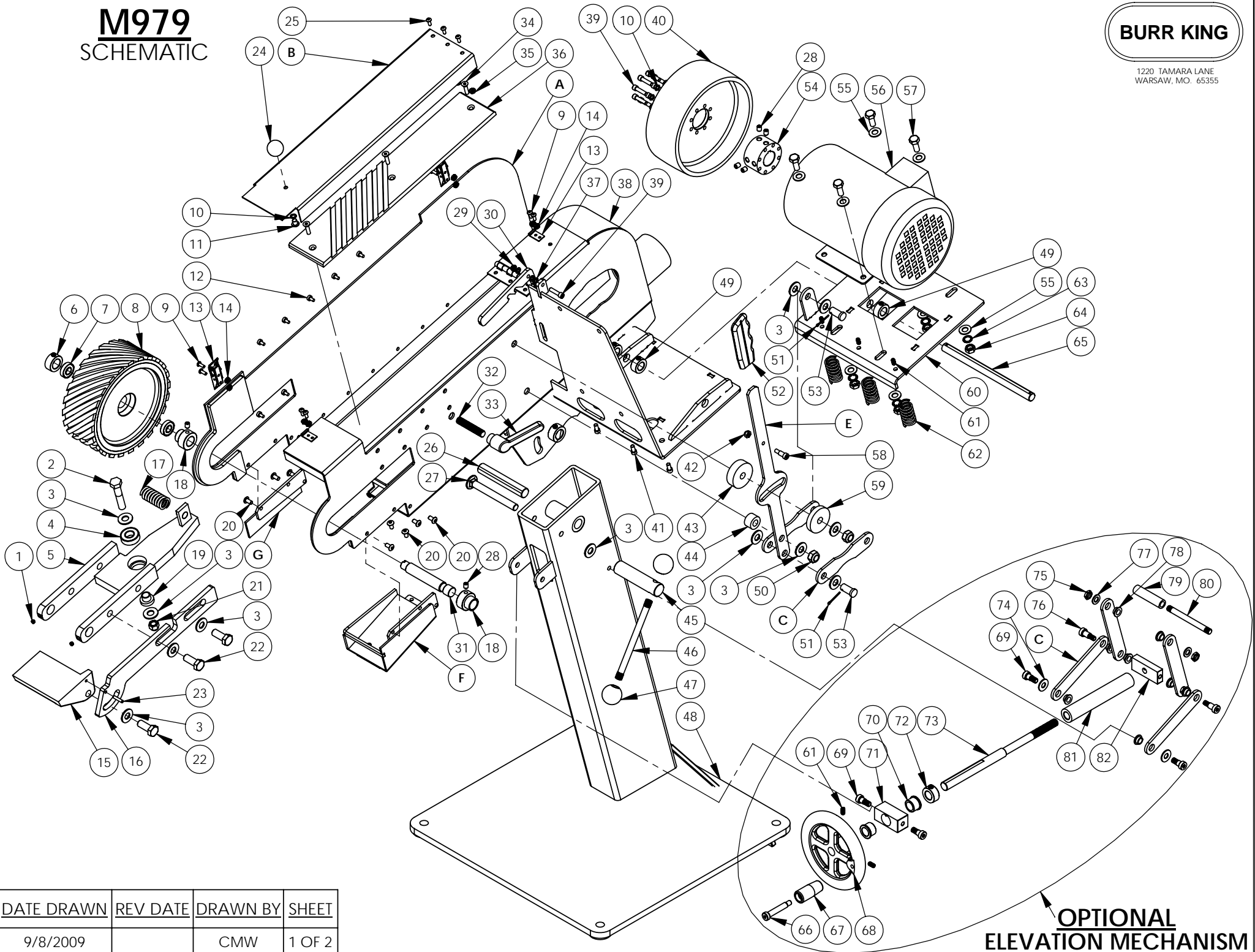


M979 SCHEMATIC

BURR KING

1220 TAMARA LANE
WARSAW, MO. 65355



**OPTIONAL
ELEVATION MECHANISM**

DATE DRAWN	REV DATE	DRAWN BY	SHEET
9/8/2009		CMW	1 OF 2



1220 TAMARA LANE
WARSAW, MO. 65355

M979			
ITEM NO.	PART NUMBER	DESCRIPTION	QTY.
1	3-0010	SCREW, 1/4-20 x 1/4, SET, CUP	2
2	1-0031	BOLT, 1/2-13 x 2.5, HH, GRD5	1
3	21	WASHER, 1/2, SAE, FLAT, ZINC	12
4	701B	BEARING	1
5	604	WELDMENT, CONTACT WHEEL	1
6	627	COLLAR, 3/4 x 1 1/4 x 9/16	1
7	11-0011	BEARING	2
8	9320	CONTACT WHEEL, 8x3, FORCK, 90D, SR	1
9	24	SCREW, 6-32 x 1/2, MACH	8
10	5-0032	WASHER, 1/4, LOCK, SPLIT	9
11	2-0015	SCREW, 5/16-24 x 3/8 BH	1
12	6-0011	RIVETS, SS, 3/16 x 1/2	7
13	623	LATCH, DRAW	2
14	23	NUT, 6-32, KEP	8
15	622	WORKREST	1
16	661	SUPPORT, WORKREST	1
17	616	SPRING, TRACKING	1
18	699	BUSHING, ECCENTRIC	2
19	638	SPACER, NOSE	1
20	2-0028	SCREW, 1/4-28x1/2 BH	8
21	41	NUT, 1/2-13, NYLOK, ZP STD	1
22	1-0028	BOLT, 1/2-13 x 1 1/4 HH	3
23	6-0001	PIN, 3/16 X 1, ROLL	1
24	660	KNOB, 1/4-20, PLASTIC, BALL	1
25	9	SCREW, 10-24x1/2 BH	3
26	606	ROD, HEAD PIVOT	1
27	1-0029	BOLT, 1/2-13x4.5, GRD5, CARR, PL	1
28	25	SCREW, 5/16-18 X 3/8, SET, SOC	6
29	4-0013	NUT, 1/4-20, KEP	1
30	634	LATCH, TENSION RELEASE	1
31	1602-3M	SHAFT, CONTACT WHEEL	1
32	642	ROD, 1/2-13 ALL THREAD, 3.5"	1
33	624	HANDLE, 1/2-13, BELT TRACKING	1
34	7-0008	SCREW, 1/4-20 x 1, FLAT HD, ALLEN	3
35	14	NUT, 10-24, KEP	3
36	621	PLATEN	1
37	5	WASHER, 960-416 AN	3
38	603	WELDMENT, MAIN HEAD	1
39	30	SCREW, 1/4-20x1 SOC CAP	9
40	625	WHEEL, DRIVE, 8 x 3	1
41	1431	BOLT, 1/4-20 X 1/2 ALLEN, CS	3
42	11B	NUT, 1/4-20, ACORN, CROWN	1
43	629	SPACER, 2OD x 1/2ID, DELRIN	1
44	631	SPACER, 1OD x 1/2ID, DELRIN	1
45	2039	SHAFT, MAIN, TABLE, CLAMP	1
46	2027	ARM, GEARBOX LOCKING	1
47	2049	KNOB, BALL, BLK, PLASTIC	2
48	601	PEDESTAL, 979	1
49	628	COLLAR, 5/8 x 1 1/8 x 1/2	3
50	4-0001	NUT, 1/2-13, JAM, ESNA 21, NYLOK	2

M979			
ITEM NO.	PART NUMBER	DESCRIPTION	QTY.
51	6-0005	PIN, COTTER 1/8 x 1	2
52	636	GRIP, HAND, 3/16 x 1 x 4 3/4	1
53	6-0010	PIN, CLEVIS, 1/2 x 1	2
54	635	HUB, DRIVE, 2.48OD x 1.125ID	1
55	5-0023	WASHER, 3/8 X 7/8, USS	8
56	MOTOR	CALL FACTORY	1
57	1-0001	BOLT, 3/8-16 x 1 HEX HEAD	4
58	2-0039	BOLT, 5/16 x 1/2 SHOULDER	1
59	632	WASHER, 2OOD x 1/2ID, DELRIN	1
60	605	WELDMENT, MOTOR MOUNT	1
61	1445	SCREW, 1/4-20 x 3/8, SET	5
62	626	SPRING, BELT TENSION	3
63	5-0014	WASHER, 3/8, LOCK, INTERNAL STAR	4
64	12B	NUT, 3/8-16, HEX, FULL, GRD 5	4
65	617	ROD, MOTOR MOUNT	1

603 INCLUDES			
ITEM NO.	PART NUMBER	DECRPTION	QTY.
A	603S	DOOR, SIDE, 603 GUARD	1
B	603V	DOOR, TOP, 603 GUARD	1
C	615	BAR, ELEVATION, 1 x 3/16 x 7- 3/4	4
D	618	LINK, FLAT, 1 x 3/16 x 8- 1/2	2
E	619	HANDLE, TENSION RELEASE	1
F	653	MOUTH ASSEMBLY	1
G	655	MOUTH ASSEMBLY, DOOR	1

OPTIONAL ELEVATION MECHANISM			
ITEM NO.	PART NUMBER	DESCRIPTION	QTY.
66	2-0021	SCREW, 3/8 x 1 3/4, 5/16-18 x 1/2	1
67	2044	HANDLE, SMALL WHEEL	1
68	2013	WHEEL, HAND, SMALL	1
69	613	BOLT, 3/8 x 5/16, SHOULDER	4
70	2025	BUSHING, OILLITE, FLANGE	2
71	609-1	BLOCK, FRONT ELEVATION	1
72	628	COLLAR, 5/8 x 1 1/8 x 1/2	1
73	607	ROD, ELEVATION	1
74	40	WASHER, 3/8, SAE	2
75	39	NUT, 3/8-24, JAM, ESNA, NTE	2
76	2-0040	SCREW, 1/4-20 x 1 1/2, HH	2
77	17	WASHER, 960-616, AN	2
78	614	BUSHING, FLANGE	8
79	602	SPACER, ELEVATION	1
80	637	SUPPORT, ARM, ELEVATION	1
81	608	TUBE, ELEVATION	1
82	610-1	BLOCK, REAR ELEVATION	1

TITLE	DATE DRAWN	REV DATE	DRAWN BY	SHEET
979	9/8/2009		CMW	2 OF 2