

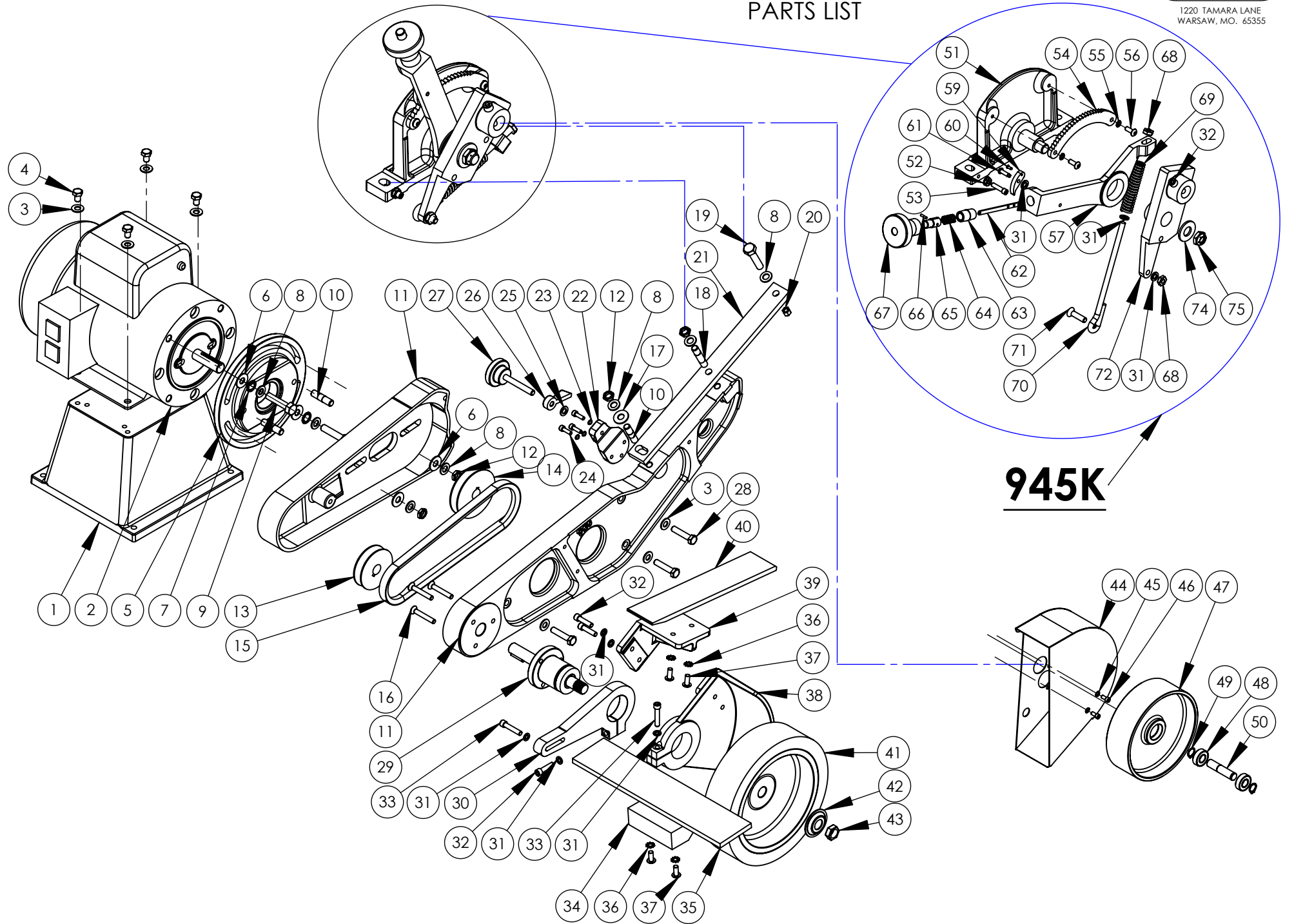
MODEL 960-272

8" CONTACT WHEEL

PARTS LIST

BURR KING

1220 TAMARA LANE
WARSAW, MO. 65355



960-272**945K****BURR KING**1220 TAMARA LANE
WARSAW, MO. 65355

ITEM NO.	PART NUMBER	DESCRIPTION	QTY.
1	941	BASE	1
2	MOTOR	CALL FACTORY *	1
3	4	WASHER, 5/16 SAE ZINC PLTD	7
4	2	BOLT, 5/16-18x1 1/2 HEX HEAD	4
5	908	ADAPTER, C-FACE MOTOR	1
6	42	WASHER, SAE, 3/8	4
7	5-0014	WASHER, LOCK 3/8, INTERNAL STAR	2
8	17	WASHER, 960-616, AN	7
9	1-0003	BOLT 3/8-16 x 1 1/4 HEX HEAD	2
10	920	STUD 3/8"x1 1/2", DOUBLE	3
11	900A	FRAME/GUARD ASSEMB	1
12	39	NUT, 3/8-24, JAM, ESNA, NTE	4
13	725	PULLEY, 2 1/2	1
14	730	PULLEY, 3	1
15	429K	BELT, V DRIVE	1
16	6	SCREW 1/4-20 x 1 1/2 FH SOC	3
17	40	WASHER, SAE, 3/8	1
18	920K	STUD 3/8"x1 1/2", DOUBLE	1
19	1-0004	BOLT 3/8-16 x 1 1/4 HEX HEAD	1
20	4-0007	NUT, 3/8-16, ELASTIC LOCK GD 2	1
21	943	BAR, EXTENSION	1
22	923	BRACKET, TRACKING	1
23	5-0035	WASHER, #10, LOCK, HIGH COLLAR	3
24	2-0023	SCREW, 10-24 X .625 ALLEN HEAD	3
25	18	WASHER, 960-516, AN	1
26	922	LOCK, KNOB, TRACKING	1
27	921	KNOB, TRACKING ASSY	1
28	1-0019	BOLT, 5/16-18x1 1/2 HEX HEAD	3
29	701	HOUSING, BEARING, w/keyway	1
30	916-1	ARM, WORKREST SUPPORT	1
31	5	WASHER, 1/4 AN	8
32	30	SCREW 1/4-20x1 SHCS	4
33	31	SCREW 1/4-20x1 1/4 SHCS	2
34	917	WORKREST	1
35	966-01	REST EXTENDER	1
36	5-0008	WASHER, 1/4, LOCK, EXTERNAL	4
37	2-0046	SCREW, 1/4-28x1/2 BH, BLK OX	4
38	903K	GUARD, CONTACT WHEEL	1
39	904BK	BRACKEN, PLATEN	1
40	964-01	PLATEN, MAIN 272	1
41	902	WHEEL, CONTACT	1
42	726	FLANGE, OUTER WHEEL	1
43	727	NUT, 5/8-18 RH, JAM, BRT PLT	1
44	912	GUARD, IDLER WHEEL	1
45	5-0032	WASHER, 1/4, LOCK, SPLIT, PLTD	2
46	1431	SCREW, 1/4-20 x 1/2 ALLEN HEAD	2
47	907K	WHEEL, IDLER, w/Brg. & Shaff	1
48	701B	BEARING	1
49	701F	RING, RETAINING 5/8 EXT.	2
50	707c	SHAFT, BEARING	1

ITEM NO.	PART NUMBER	DESCRIPTION	QTY.
51	934	SUPPORT, REAR WHL, w/STUD	1
52	14	NUT, 10-24, KEP	1
53	13	SCREW, 10-24 x 3/4, SOC, HD, CAP	1
54	736	SECTOR	1
55	15	WASHER, 5/16 LOCK, SPLIT	2
56	9	SCREW, 10-24x1/2 BH, BLK OXIDE	2
57	937G	HANDLE	1
59	737F	PAWL	1
60	28	SCREW, DRIVE, #2 x 1/4	1
61	27	SCREW, DRIVE, #8 X 5/8	1
62	937C	STRIP, HANDLE	1
63	737E	NIPPLE, PIPE	1
64	737D	SPRING, BUTTON	1
65	737B-1	BUTTON	1
66	26	PIN, 3/32 x 3/8, ROLL PLTED	1
67	737A	KNOB, REAR TENSION ARM	1
68	3	NUT, 1/4-20 JAM, PLTD	2
69	738	SPRING, BELT TENSION	1
70	939	GUIDE, SPRING	1
71	34	SCREW, 1/4-20 X 1, FH PHILLIPS	1
72	935	SUPPORT, REAR WHEEL	1
74	21	WASHER, 1/2 ID	1
75	20	NUT, NYLOK JAM, 1/2-20	1

NOTE

* 011C

ROCKER SWITCH FOR 1PH