



BURR KING MFG. CO., INC

1220 Tamara Lane

Warsaw, MO 65355

www.burrking.com

(660)438-8998 • 800-621-2748

Fax (660)438-8991

Supplemental instructions for the Burr King Model 760 with Lawn Mower Blade Sharpener attachment.

Congratulations on your purchase of the Burr King Model 760 grinder with the sharpening attachment. With your attachment, you will start to see savings and a return on our investment immediately. Replacement blades are expensive and with this machine you will be able to sharpen your blades several times between blade replacement. The average mower blade sharpening will take less than 30 seconds with a little practice, even extremely dull blade will take just minutes to sharpen.

Please visit www.burrking.com and click on the Video Library link to see instructional videos on sharpening mower blades, rotary mower blades, and chipper blades.



Before operating any equipment please read and understand the instructions.

Please read and review all safety instructions for the Burr King Model 760 prior to operating the machine. Instructions for the Burr King Model 760 are attached to this supplement.



The Burr King Model 760 with the Lawn Mower Sharpener attachment is by far a superior way to sharpen conventional lawn mower blades, rotary mower (Bush Hog) blades, and chipper blades. The unique design of the Model 760 allows the user to sharpen even multi-level mulching blades effortlessly.

Other machines that have been designed for the industry use grinding stones. This patent pending blade sharpening attachment takes advantage of a grinding belt. A grinding belt offers the user to sharpen blades without creating excessive heat. The grinding belt on the Model 760 travels at 8,000 S.F.P.M. That's nearly 90 m.p.h. Surface feet combined with the powerful 1-1/2 hp motor will make quick work of even the dullest blades.

Burr King has been providing belt grinders and surface finishing equipment since 1951.

MADE IN U.S.A.



BURR KING®

- * GRINDERS
- * BUFFERS
- * VIBRATORY
- * DISC GRINDERS

Step 1: Set-up grinder as described in the Model 760 Manual.

Step 2: Mounting the attachment.

Your machine has been assembled and passed numerous quality checks prior to shipping. The mower blade attachment is fully assembled.

To install the attachment on the Model 760 first remove the contact wheel by using a 15/16 inch socket.

Then using a 3/16 inch allen key remove the contact wheel guard from the bearing housing.

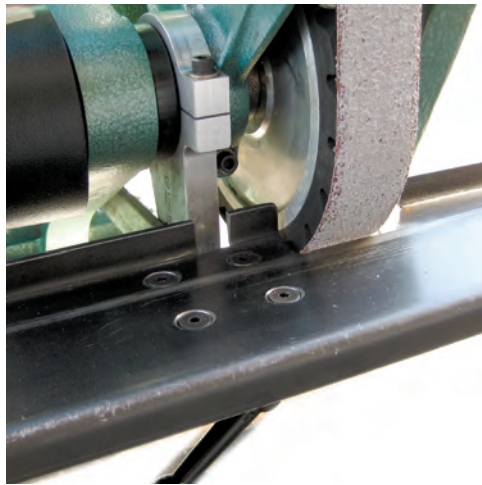
Next take the mower attachment and place it on to the bearing housing. Slide the attachment to the far left to make room to reinstall the contact wheel guard and vertical platen. You will tighten the table and guard after the next step.

Using the supplied hardware attach the support bar to the main frame of the 760 grinder. The frame has been pre-drilled for this attachment. After securing the support arm to the frame, tighten the assembly on the bearing housing with a 3/16 inch allen. Minimal force is needed when tightening any attachment or accessory to the bearing housing. Typically only a 1/8 to 1/4 turn past snug is needed to fully secure the arm to the bearing housing. *Over-tightening may cause premature bearing failure and is not covered by the grinders warranty.*

Step 3: After securing the mower blade sharpener attachment install a 24 or 36 grit belt on the machine as described in the Model 760 manual. After installing the belt we will align the vertical platen to the vertical plane of the belt. The belt should just lightly touch the back of the abrasive belt. Tighten the 3/16 allen to secure the vertical platen to the bearing housing.

Step 4: Adjust the gap on the mower blade sharpening attachment. Release the locking lever located under the grinding table. Then raise the table so the belt has just enough room to move freely and lock the table. Unlike a stone

grinder, the diameter of the contact wheel will remain nearly the same the entire life of the wheel. Also, since the diameter of the wheel will remain constant you will rarely need to adjust the table height. Another advantage of using a belt to grind metal versus a stone is when a stone reduces in diameter, you loose



surface speed making grinding times increase. A stone wheel may turn at 6,000 surface feet when it's brand new, but after limited use the diameter of the stone will decrease and the result will be increased sharpening times and the stone will retain more heat.

Step 5: Make sure belt turns freely. Plug unit in to electrical outlet. Turn machine on and check its operation. If any abnormal vibrations are noted, discontinue its use and review the troubleshooting instructions included in the 760 grinder manual. As always you may contact the factory for additional assistance.

Step 6: Preparing to grind. After reviewing all safety instructions, personal protection equipment must be worn when using this equipment.



Grinding gloves and safety glasses are required. Check with your companies safety officer for other safety requirements.

Mower Blades:

Free the blade of any grease, dirt, or clippings prior to sharpening. Check the blades to make sure they are not bent, or cracked. Using a blade balancer, check the blade for its balance. When sharpening start by grinding the light end of the blade and then follow with the heavy end.

Chipper Blades:

Free the blade of any foreign substances. Depending on style of the blade, balancing the blade maybe different then described in this manual. Most chippers require all blades to be the same height. Start with the shortest blade and use it for a reference, then moving on to the others in the set.

Rotary Style Bush Hog® Blades:

Free the blade of any foreign substances. Depending on style of the blade, balancing the blade maybe different then described in this manual. Most rotary blades can be balanced using a simple balance style scale. You may also choose to sharpen the blades using a standard scale. Once again, start with the lightest blade and then sharpen the heavier blade checking the blades for balance.

Step 7: Grinding. Burr King recommends using only a 3M or Norton 24 or 36 grit ceramic belts to sharpen blades using the blade attachment. 3M 987FI or Norton Blaze R980. These belts contain cooling aids and are constructed for heavy stock removal. Replacement belts can be ordered directly from Burr King by calling 800-621-2748, or your local industrial supply house.

Remove any burrs on the back of the blade by making a couple of passes on the slack portion of the belt. This will reduce the effort required when moving the blade across the table.

Mower blade sharpening- It is recommended to only move the blade in one direction. Assuming that you have a standard

mower blade, your direction would be from left to right. Rest blade on table, gently move blade in to rotating wheel and draw the blade to the right. Multiple passes are required to achieve the edge desired. Minimal pressure to the contact wheel is recommended. The idea is to have the belt do the cutting, not by using force against the contact wheel. Make rapid passes, each pass should only seconds in total length. If you are not moving the blade across the wheel in a rapid fashion, you will create hot spots in the blade, also, the blade will not move easily across the wheel.

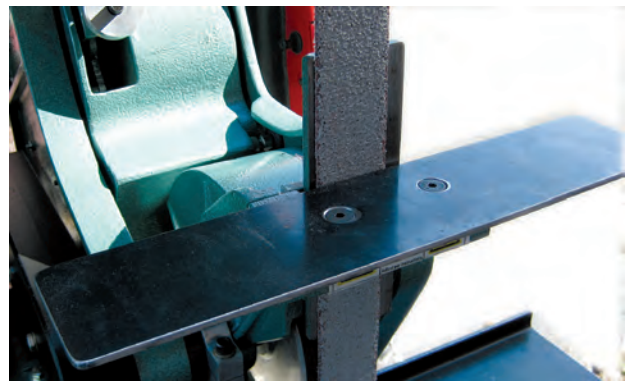
After sharpening the first edge, use the slack area of the belt to remove any burrs that may have been created in the sharpening procedure. Next, move to the second edge and repeat the procedure. Check the balance of the blade to ensure proper stock removal.

Important- if a belt is damaged, shows excessive wear, immediately stop use of the belt and discard it.

Mulching blade sharpening – Remove the vertical platen by removing the two allen bolts that attach it to the contact wheel guard. It is important to readjust the contact wheel guard to remove the pinch point created by removing the platen. By removing the platen you create a large “slack” free belt area. By using a flexible back belt (J weight) or a narrow stiff back belt you will be able to use the slack area to sharpen the blade. The operator will free hand the desired angle. After sharpening the first edge, use the slack area of the belt to remove any burrs that may have been created in the sharpening procedure. Next, move to the second edge and repeat the procedure. Check the balance of the blade to ensure proper stock removal. *Important- if a belt is damaged, shows excessive wear, immediately stop use of the belt and discard it.*

Bush hog blade sharpening- Attach the galvanized tubing to the worktable. This changes the angle for the bush hog blade to a factory recommended angle. As with mower blades, it is recommended to move the blade in only one direction. If the blade has deep chips, use the contact wheel to “face the blade” Move up on the contact wheel a couple of inches to the centerline and run the blade back and forth several times to even the edge of the blade. Next you will rest the blade against the tubing and start the sharpening process. Again use only light inward pressure. The belt and speed of the belt will do all the work for you. *Important- if a belt is damaged, shows excessive wear, immediately stop use of the belt and discard it.*

Chipper blade sharpening- only sharpen blades that are long and wide enough to safely hold on to. A special chipper blade holder can be purchased from the Burr King factory. As with any sharpening process on the grinder move only in one direction and apply minimal inward force. *Important- if a belt is damaged, shows excessive wear, immediately stop use of the belt and discard it.*



Chain Saw Bar grinding attachment.

To attach the Chain Saw Bar grinding attachment to the vertical platen simply loose the allen bolt to slide in the slot. Tighten, and you're ready to go. The Chain Saw Bar grinding attachment will always be 90 degrees to the vertical platen. A 120 grit or higher belt is recommended for the attachment. When the

attachment is not in use it is recommended that you remove it from the vertical platen. If the Chain Saw Bar grinding attachment is left on the machine during mower blade sharpening it may interfere visually when sharpening blades.

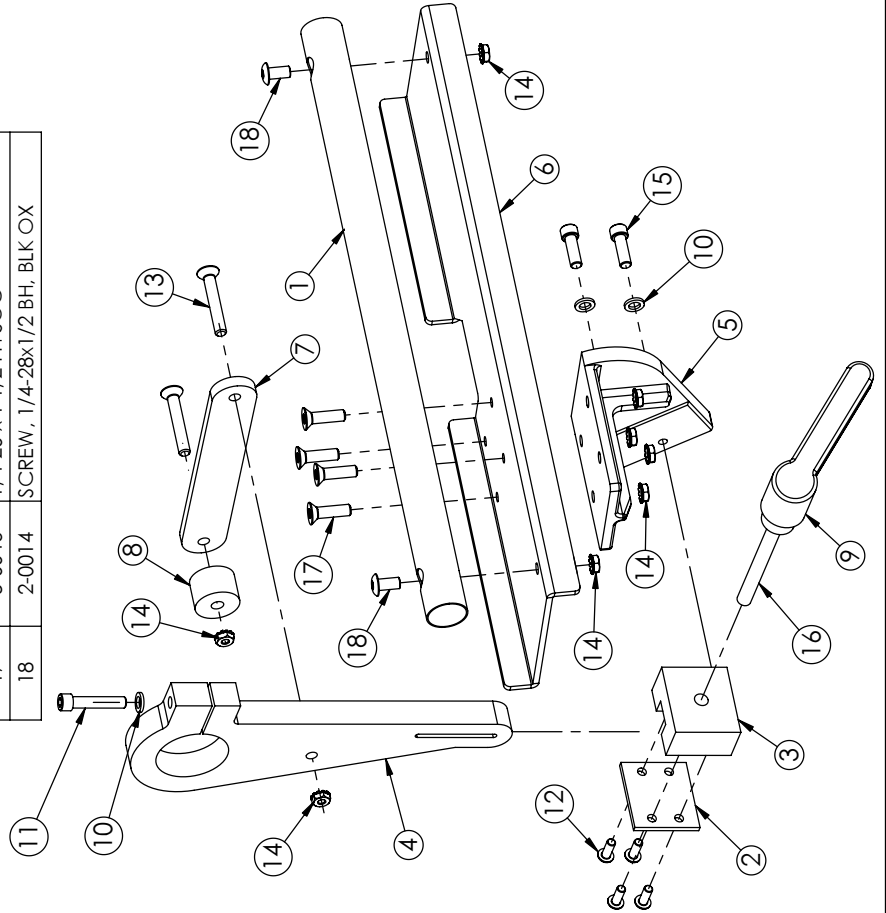


Please visit www.burrking.com and click on the Video Library link to see instructional videos on sharpening mower blades, rotary mower blades, and chipper blades.

MOWER BLADE ATTACHMENT

PARTS LIST

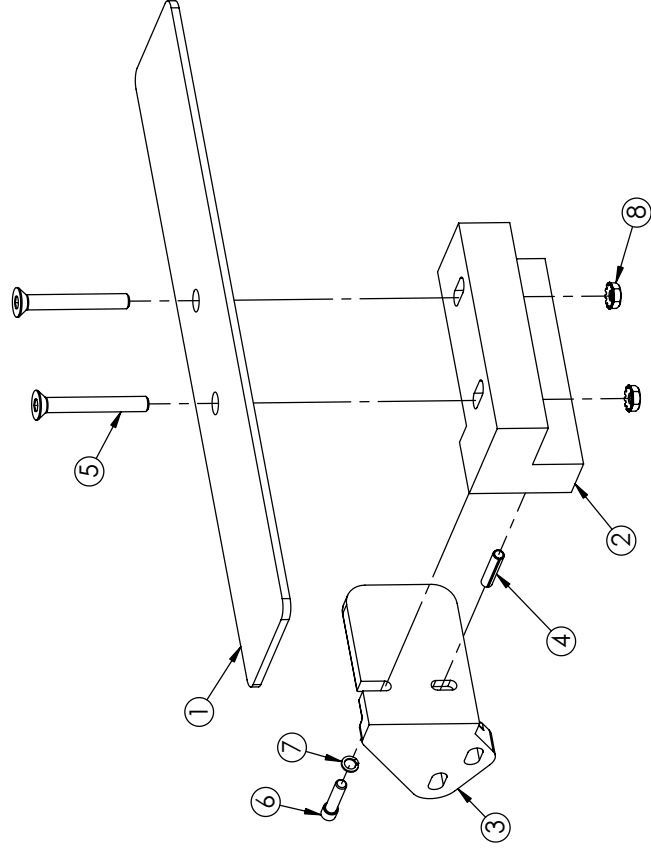
ITEM #	PART #	DESCRIPTION
1	9602	TUBE, ANGLE
2	9605	PLATE, ALIGNMENT
3	9606	BLOCK, GUIDE
4	9607	ARM, WORKREST SUPPORT
5	9608	BRACKET, PLATEN
6	9609	TABLE, WORK
7	9610	BRACKET, ARM
8	9611	BRACKET, BLOCK
9	1203	HANDLE
10	5	WASHER, 1/4 AN
11	31	1/4-20x1 1/4 SHCS
12	9	SCREW, 10-24x1/2 BH, BLK OXIDE
13	6	1/4-20 x 1 1/2 FH SOC
14	4-0013	NUT, KEP, 1/4-20
15	209	SCREW, 1/4-20 X 3/4 ALLEN HEAD
16	711B	SHAFT, 5/16-18 x 3/8, PLTD
17	5-0046	1/4-20 x 1 1/2 FH SOC
18	2-0014	SCREW, 1/4-28x1/2 BH, BLK OX



CHAINSAW BLADE ATTACHMENT

PARTS LIST

ITEM #	PART #	DESCRIPTION
1	9603	PLATEN, CHAIN SAW
2	9604	BLOCK, ALUMIN, CHAIN SAW
3	9613	BRACKET, PLATEN
4	6-0001	PIN, 3/16 X 1, ROLL PLTD
5	6	1/4-20 x 1 1/2 FH SOC
6	13	SCREW, 10-24 x 3/4, SOC, HD, CAP
7	5-0049	WASHER, #10, LOCK, HIGH COLLAR
8	4-0013	NUT, KEP, 1/4-20



BURR KING

1220 TAMARA LANE
WARSAW, MO. 65355